

# sP20-B | The stove stuv

## FEATURES

<b>delight of the fire</b>	<ul style="list-style-type: none"> <li>enlarged view</li> <li>continuous line of the combustion chamber</li> <li>maximum experience from different areas of the living room</li> </ul>
<b>pleasant heating</b>	<ul style="list-style-type: none"> <li>over 90% efficiency</li> <li>natural convection to distribute heat more broadly</li> <li>optional ductable convection, with ventilation adjustable on 4 levels</li> <li>amplified radiation thanks to the large glazed area</li> <li>flame quality comparable to those of a wood fire, thanks to its patented "flower burner"</li> </ul>
<b>ease of use</b>	<ul style="list-style-type: none"> <li>quick access to different functions and operating modes via the integrated simplified control display</li> <li>full remote control via mobile app</li> <li>optional remote control with integrated thermostat</li> <li>automatic ash removal for minimal maintenance</li> <li>large-capacity ash drawer</li> <li>sensor to indicate amount of pellets</li> </ul>
<b>ergonomics</b>	<ul style="list-style-type: none"> <li>front loading via a wide, ergonomic hopper</li> <li>30 kg pellet tank with no risk of overflow</li> <li>integrated bag support, eliminating physical effort during handling</li> <li>braked top finishing tablet, concealing the loading door and control screen, equipped with a cool and high-quality wooden handle</li> </ul>
<b>ease of installation &amp; maintenance</b>	<ul style="list-style-type: none"> <li>four types of connection to outside air</li> <li>possibility of flue connection from the top of the appliance (single or concentric outlet)</li> <li>easy access through opening panels</li> <li>hinged access to fan</li> <li>chimney sweep at ground level</li> <li>remote monitoring of operation and possible maintenance</li> </ul>
<b>high quality</b>	<ul style="list-style-type: none"> <li>ceramic igniter</li> <li>two-point locking system</li> <li>thick casing</li> <li>extremely well sealed</li> </ul>
<b>patent</b>	<ul style="list-style-type: none"> <li>flower burner</li> </ul>



reddot winner 2025

## sP20-B | The stove

## TECHNICAL OVERVIEW

### GENERAL

TYPE OF STOVE	stove
FUEL	wood pellets
MATERIALS OF BODY OF FIRE CHAMBER	steel + vermiculite
MATERIALS COVERING BASE	steel
COLOUR	StûvBlack
LOADING	manual

### WEIGHT / DIMENSIONS

WEIGHT	158 kg
DIAMETER OF SMOKE FLUE	80mm 80/130mm
DIAMETER OF OUTSIDE AIR INLET	60 mm

### AIR

EXTERNAL INLET	✓
AIR-TIGHTNESS	+++

### PERFORMANCE

ENERGY EFFICIENCY CLASS	A+
ENERGY PERFORMANCE INDEX	0,027
ENERGY EFFICIENCY INDEX	129
OUTPUT	8,5 kW
OUTPUT RANGE	3,7 - 8,5 kW
NOMINAL EFFICIENCY	90,9%
SEASONAL EFFICIENCY	88,1%
FINE PARTICLE EMISSIONS	5 mg/Nm <sup>3</sup>
CO EMISSIONS	0,0008 % 10 mg/Nm <sup>3</sup>
NOX EMISSIONS	99 mg/Nm <sup>3</sup>
COV/COG EMISSIONS	< 1 mg/Nm
RANGE OF CONSUMPTION	0,84 - 1,84 kg/h
NOMINAL DRAW	2 Pa
SMOKE MASS FLOW	5,3 g/s
AVERAGE TEMP. OF SMOKE	173,5°C
HOPPER CAPACITY	30 kg
INDEPENDENT OPERATING DURATION (MIN/MAX)	16 - 37 h
ELECTRICAL CONNECTION	230 - 50 V/Hz
ELECTRICAL CONSUMPTION	24 W

### MINIMUM THICKNESS OF INSULATION BETWEEN STOVE AND COMBUSTIBLE MATERIALS

BACK FACE	10 cm
SIDE FACE	10 cm
TOP FACE	75 cm
BOTTOM FACE	0 cm

### ACCESSORIES / EQUIPMENT

REMOTE CONTROL	<input type="radio"/>
MANUAL ASH REMOVAL RACK	<input checked="" type="checkbox"/>
ASH PAN	<input checked="" type="checkbox"/>
WIFI HANDSET	<input type="radio"/>

### LEGEND

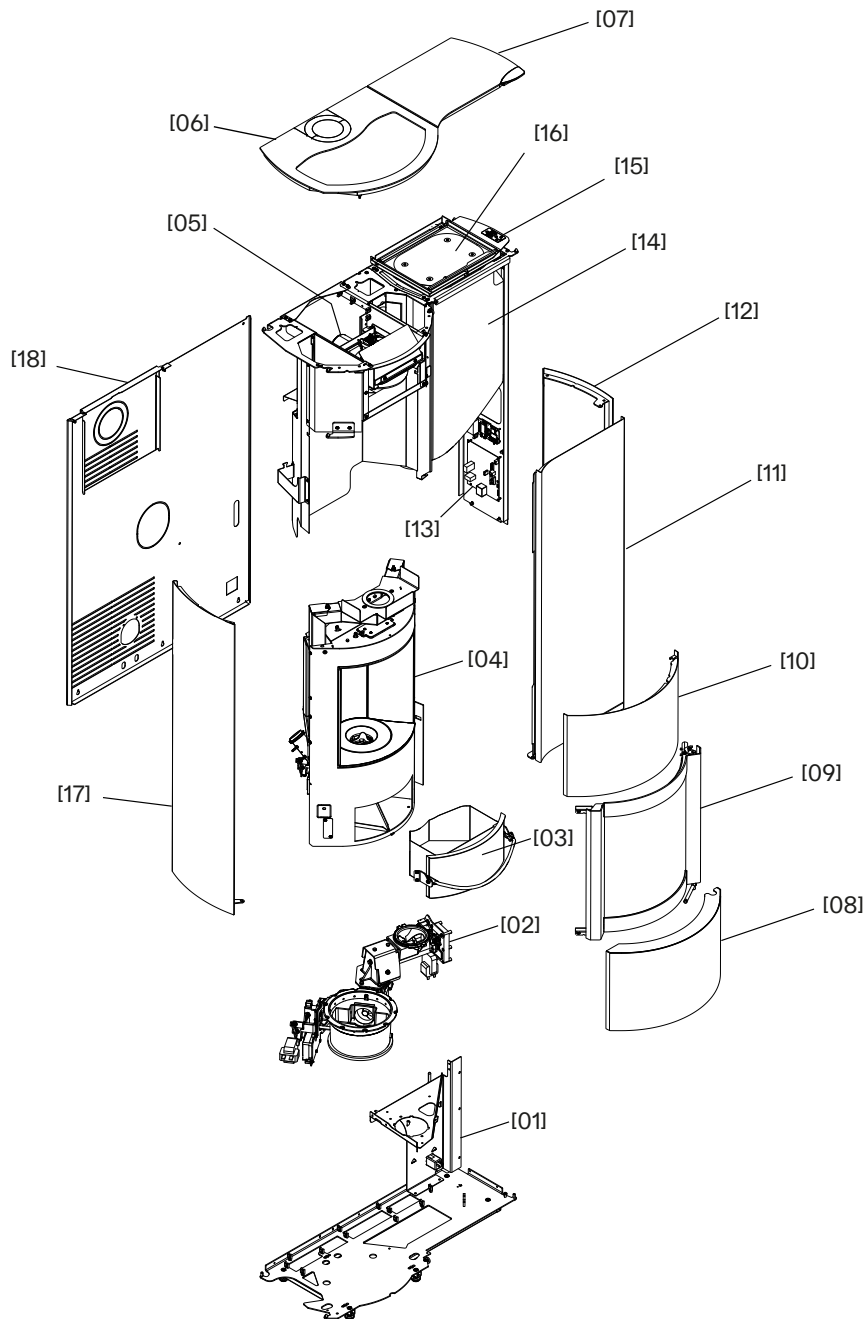
✓	STANDARD
X	UNAVAILABLE
<input type="radio"/>	OPTIONAL

Conforms with:



ECODESIGN 2022 / BE Phase 3 / DEFRA

## THE BASIC STOVE AND ITS COMPONENTS



- [01] Base and tank support structure
- [02] Pellet feed screws and burner pot
- [03] Ash drawer
- [04] Combustion chamber, heat exchanger, safety valve and internal lining
- [05] Smoke extractor
- [06] Left top shelf

- [07] Right top shelf
- [08] Access door
- [09] Combustion chamber door
- [10] Pediment
- [11] Front right cladding
- [12] Right side cladding
- [13] Electronic board

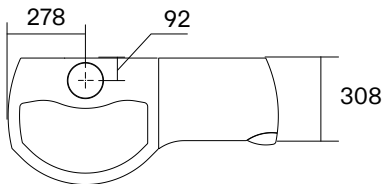
- [14] Pellet tank
- [15] SCD
- [16] Loading hatch
- [17] Left side cladding
- [18] Rear cladding

# sP20-B | The stove

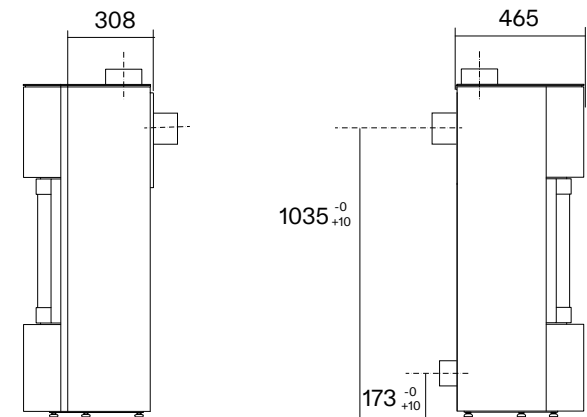


## DIMENSIONS OF THE STOVE

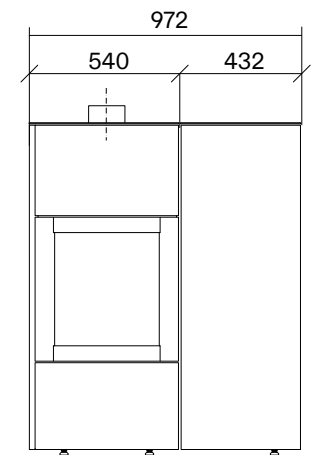
TOP VIEW



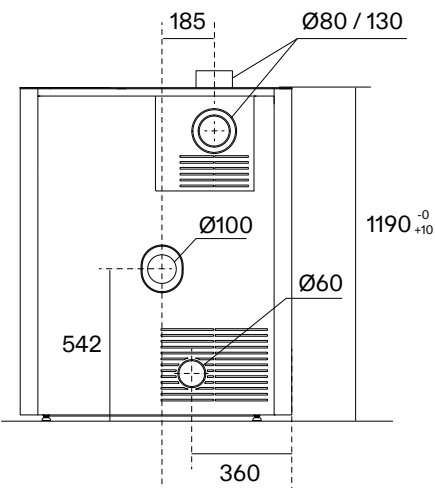
SIDE VIEW



FRONT VIEW



REAR VIEW



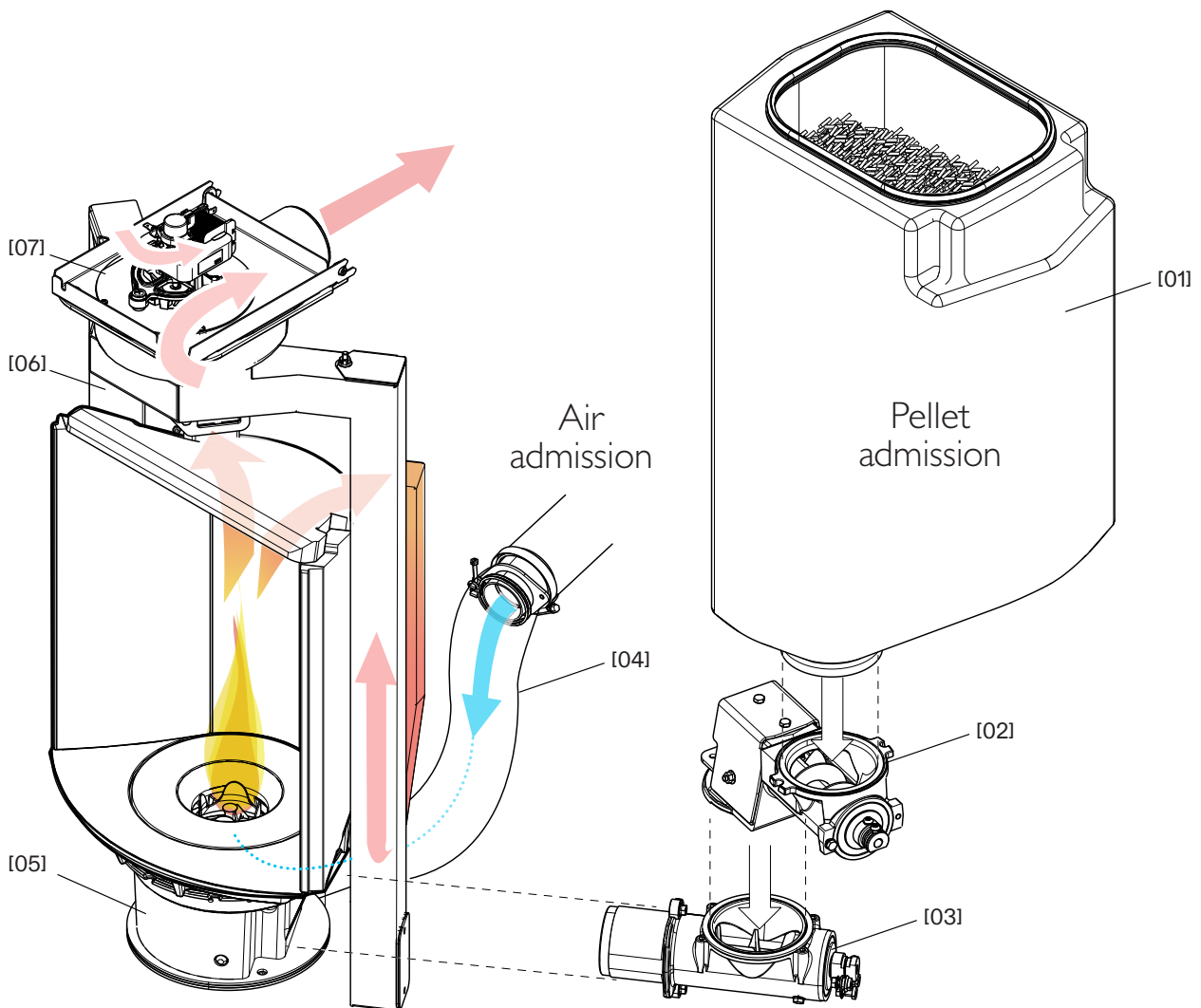
## MODE OF OPERATION

Your Stuv P20-B has been designed to offer incomparable combustion quality and pleasure.

The exceptional quality of its patented flower burner, the large capacity of its tank, as well as its advanced programming options (electronics and intelligent sensors) guarantee you an experience perfectly adapted to your needs.

Once set up, your device will automatically modulate its operation to provide optimal thermal comfort.

The communicated power will thus vary by regulating the quantity of pellets fed to the burner and the amount of air supplying the combustion. The combustion chamber diffuses an enveloping heat, combining radiation and convection, while the curved glass offers you a clear view of the flame.



[01] Pellet tank

[02] Intake screw 1

[03] Intake screw 2

[04] Air intake channel

[05] Burner

[06] Heat exchanger

[07] Extractor

REMOTE CONTROL



WIFI HANDSET



PELLET TWIN SET

