

# sP20-B | The stove



## FEATURES

delight of the fire	enlarged view
	continuous line of the combustion chamber
	maximum experience from different areas of the living room
pleasant heating	over 90% efficiency
	natural convection to distribute heat more broadly
	optional ductable convection, with ventilation adjustable on 4 levels
	amplified radiation thanks to the large glazed area
	flame quality comparable to those of a wood fire, thanks to its patented "flower burner"
ease of use	quick access to different functions and operating modes via the integrated simplified control display
	full remote control via mobile app
	optional remote control with integrated thermostat
	automatic ash removal for minimal maintenance
	large-capacity ash drawer
	sensor to indicate amount of pellets
ergonomics	front loading via a wide, ergonomic hopper
	30 kg pellet tank with no risk of overflow
	integrated bag support, eliminating physical effort during handling
	braked top finishing tablet, concealing the loading door and control screen, equipped with a cool and high-quality wooden handle
ease of installation & maintenance	four types of connection to outside air
	possibility of flue connection from the top of the appliance (single or concentric outlet)
	easy access through opening panels
	hinged access to fan
	chimney sweep at ground level
	remote monitoring of operation and possible maintenance
high quality	ceramic igniter
	two-point locking system
	thick casing
	extremely well sealed
patent	flower burner



## sP20-B | The stove

**stuv****TECHNICAL OVERVIEW****GENERAL**

TYPE OF STOVE	stove
FUEL	wood pellets
MATERIALS OF BODY OF FIRE CHAMBER	steel + vermiculite
MATERIALS COVERING BASE	steel
COLOUR	StûvBlack
LOADING	manual

**WEIGHT / DIMENSIONS**

WEIGHT	158 kg
DIAMETER OF SMOKE FLUE	80mm 80/130mm
DIAMETER OF OUTSIDE AIR INLET	60 mm

**AIR**

EXTERNAL INLET	✓
AIR-TIGHTNESS	+++

**NOMINAL PERFORMANCE**

NOMINAL POWER	8,5 kW
RANGE OF USAGE	3,7 - 8,5 kW*
HOPPER CAPACITY	30 kg
RANGE OF CONSUMPTION	0,81 - 1,9 kg/h
INDEPENDENT OPERATING DURATION (MIN/MAX)	16 - 37 h
EFFICIENCY	90,9%
SEASONAL EFFICIENCY	87,7%
CO EMISSIONS	0,0008%
FINE PARTICLE EMISSIONS	5,1 mg/Nm³
MINIMUM DRAW	6 Pa
SMOKE MASS FLOW	5,3 g/s
AVERAGE TEMP. OF SMOKE	218°C
ELECTRICAL CONNECTION	220 - 50 V/Hz
ELECTRICAL CONSUMPTION	24 W
ENERGY EFFICIENCY INDEX (EEI)	129
ENERGY EFFICIENCY CLASS	A+

**MINIMUM SAFETY DISTANCE FOR  
COMBUSTIBLE MATERIALS**

BACK FACE	10 cm
SIDE FACE	10 cm
TOP FACE	75 cm
BOTTOM FACE	0 cm

**ACCESSORIES / EQUIPMENT**

REMOTE CONTROL	○
MANUAL ASH REMOVAL RACK	✓
ASH PAN	✓
WIFI HANDSET	○

**LEGEND**

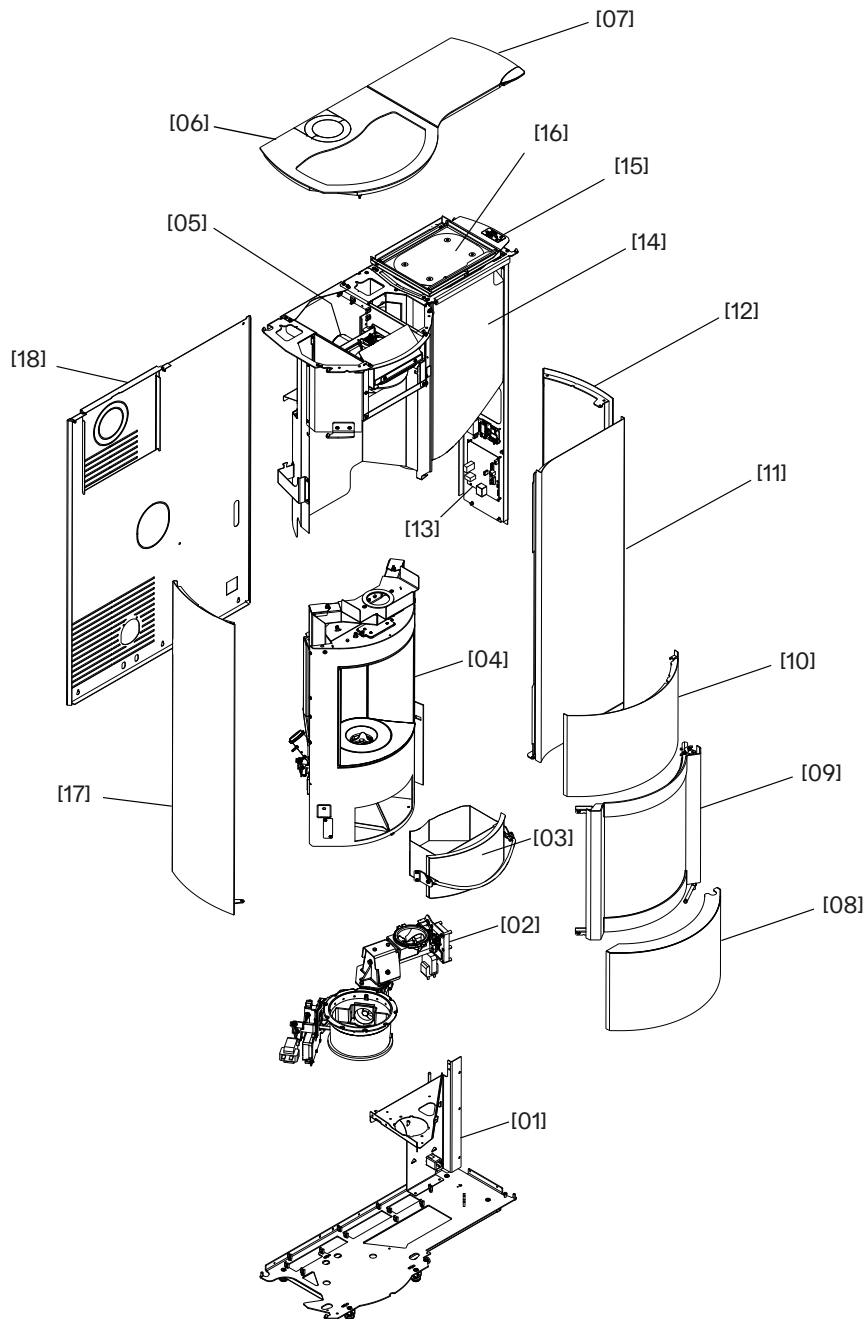
✓	STANDARD
✗	UNAVAILABLE
○	OPTIONAL

\* Minimum power (3,7 kW) ou nominal power (8,5 kW) depending on installation restrictions

# sP20-B | The stove



## THE BASIC STOVE AND ITS COMPONENTS



- [01] Base and tank support structure
- [02] Pellet feed screws and burner pot
- [03] Ash drawer
- [04] Combustion chamber, heat exchanger, safety valve and internal lining
- [05] Smoke extractor
- [06] Left top shelf

- [07] Right top shelf
- [08] Access door
- [09] Combustion chamber door
- [10] Pediment
- [11] Front right cladding
- [12] Right side cladding
- [13] Electronic board

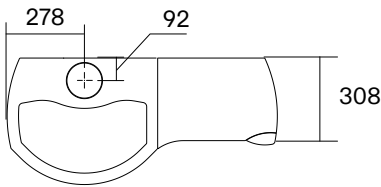
- [14] Pellet tank
- [15] SCD
- [16] Loading hatch
- [17] Left side cladding
- [18] Rear cladding

sP20-B | The stove

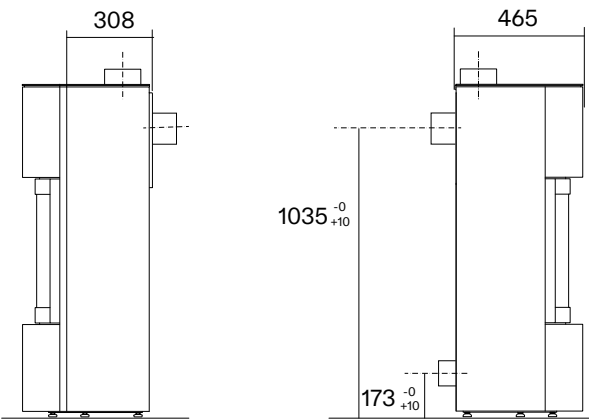
stuv

DIMENSIONS OF THE STOVE

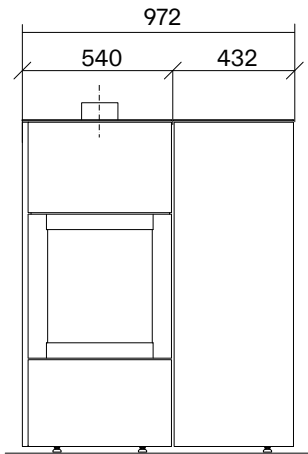
TOP VIEW



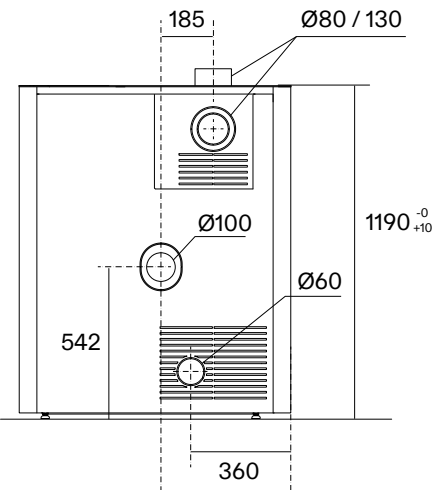
SIDE VIEW



FRONT VIEW



REAR VIEW



# sP20-B | The stove

**stûv**

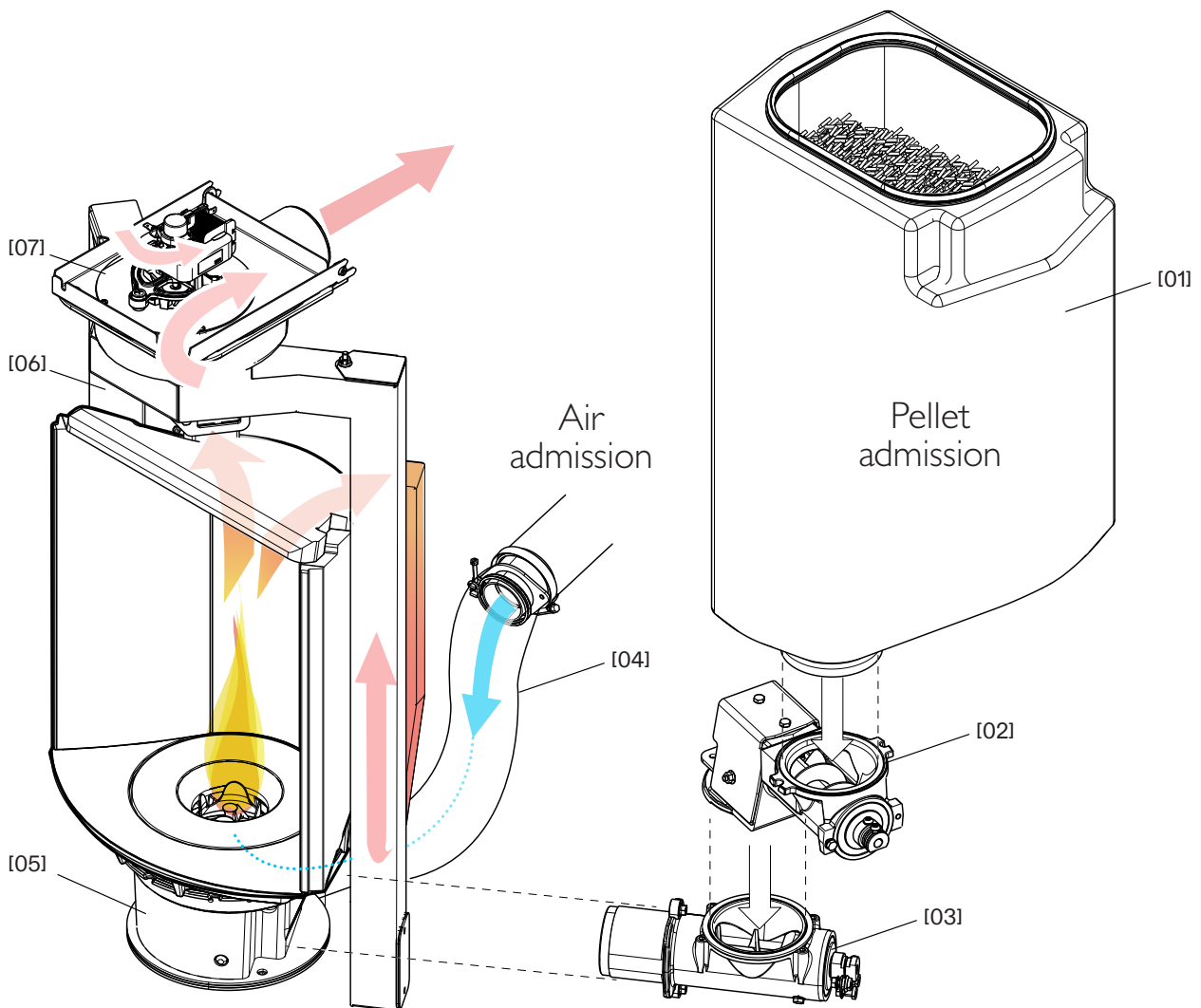
## MODE OF OPERATION

Your Stûv P20-B has been designed to offer incomparable combustion quality and pleasure.

The exceptional quality of its patented flower burner, the large capacity of its tank, as well as its advanced programming options (electronics and intelligent sensors) guarantee you an experience perfectly adapted to your needs.

Once set up, your device will automatically modulate its operation to provide optimal thermal comfort.

The communicated power will thus vary by regulating the quantity of pellets fed to the burner and the amount of air supplying the combustion. The combustion chamber diffuses an enveloping heat, combining radiation and convection, while the curved glass offers you a clear view of the flame.



[01] Pellet tank

[02] Intake screw 1

[03] Intake screw 2

[04] Air intake channel

[05] Burner

[06] Heat exchanger

[07] Extractor

# sP20-B | Accessories

**stuv**

## REMOTE CONTROL



## WIFI HANDSET



## PELLET TWIN SET

